



Commander 3 Key Management Software

Where is the digital camera? Who has been using the company car? When was the technician in the building? proxSafe is the intelligent management system for keys and valuables which provides answers to your daily 'key questions'. Contactless RFID keytag technology provides reassuring reliability. The proxSafe family is modular, expandable and network ready.

Commander 3

The proxSafe Commander 3 gives you full control over your proxSafe system and allows detailed configuration and management of reports. Commander 3 contains all the features of the latest access control systems.

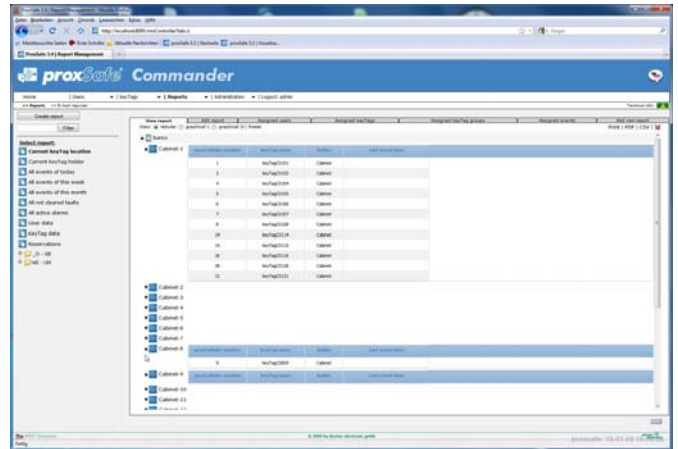
User data can be programmed manually or imported from other databases. Each user can be assigned to individual user rights and time profiles. All information about the keyTags and the related keys and objects is stored. Individual access times and durations can be programmed. The definition of user and keyTag groups helps to manage your various data easily and with good oversight. The comprehensive reporting tool provides information about the location or the holder of a keyTag at any time. You can retrieve all key transactions with various provided sorting and filter parameters. Access rights can be managed through proxSafe Commander 3 for every user. A log file gives you control over any event in the proxSafe data base. A back-up tool secures your data.

Commander 3 offers special features for a variety of applications. Contact us with your special requirements and we can help to make sure that the proxSafe Commander 3 fulfills your specification.

With the Web Service Interface other programs can control the features of proxSafe Commander 3. You can import and export all sorts of data and retrieve event data. Therefore, the proxSafe Commander 3 can be integrated seamlessly into any other software system.

Your benefits at a glance:

- **Contains All Features of the Latest Access Control Systems**
- **Can Be Customised for a Variety of Applications**
- **Can Be Seamlessly Integrated Into Any Other Software System**



Technical Data

Data Base: SQL Express 2005

Terminal Communication: communication module on NET communication via USB or TCP/IP

User Communication: Apache Tomcat web server

Programming Interface: Web Service Interface Apache Axis2

System Requirements Server: Windows XP SP2 or later (Windows Server 2003/2008, Vista, Windows 7), 32 - or 64-bit.
1 GB of RAM (2 GB recommended)
1 GB of free hard disk space
Intel® or compatible Processor at 1.4 GHz or faster (2 GHz recommended)

System Requirements Client: Web browser (IE 7, Firefox or equiv.)